

Ultra-Fast Soft Recovery Diode Module

Description

Ultra-FRD module devices are optimized to reduce losses and EMI/RFI in high frequency power conditioning electrical systems. These diode modules are ideally suited for power converters, motors drives and other applications where switching losses are significant portion of the total losses.

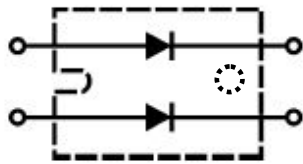
Features

- ☞ Repetitive Reverse Voltage : $V_{RRM} = 300V$
- ☞ Low Forward Voltage Drop : $V_F(\text{typ.}) = 1.3V$
- ☞ Average Forward Current : $I_F(\text{AV.}) = 120A @ T_c = 100^\circ C$
- ☞ Ultra-Fast Reverse Recovery Time : $t_{rr}(\text{typ.}) = 55 \text{ ns}$
- ☞ Extensive Characterization of Recovery Parameters
- ☞ Reduced EMI and RFI
- ☞ Isolation Type Package

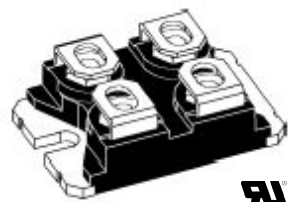
Applications


Motor Drives, Free wheel use, High Power Converters, Welders, Various Switching and Telecommunication Power Supply.

Equivalent Circuit and Package



Package : SOT-227



 E301932

Please see the package Out line information

Absolute Maximum Ratings @ $T_j=25^\circ C$ (Per Leg)

Symbol	Parameter	Conditions	Ratings	Unit
V_{RRM}	Repetitive Peak Reverse Voltage		300	V
$V_{R(DC)}$	Reverse DC Voltage		240	V
$I_{F(AV)}$	Average Forward Current	@ $T_c = 25^\circ C$ @ $T_c = 100^\circ C$	240 120	A A
I_{FSM}	Surge(non-repetitive) Forward Current	One Half Cycle at 60Hz, Peak Value	2400	A
I^2t	I^2t for Fusing	Value for One Cycle Current, $t_w = 8.3ms, T_j = 25^\circ C$ Start	7.1×10^3	A^2s
T_j	Junction Temperature		-40 ~ 150	$^\circ C$
T_{stg}	Storage Temperature		-40 ~ 125	$^\circ C$
V_{isol}	Isolation Voltage	@ AC 1 minutes	2500	V
P_d	Maximum Power Dissipation		300	W
-	Mounting Torque		1.45	N.m
-	Terminal Torque		1.45	N.m
-	Weight	Typical Including Screws	30	g

Thermal Characteristics

Symbol	Parameter	Conditions	Values			Unit
			Min.	Typ.	Max.	
$R_{th(j-c)}$	Thermal Resistance	Junction to Case	-	-	0.41	°C/W

Electrical Characteristics @ $T_j=25^\circ\text{C}$ (unless otherwise specified)

Symbol	Parameter	Conditions	Values			Unit	
			Min.	Typ.	Max.		
V_R	Cathode Anode Breakdown Voltage	$I_R = 100\mu\text{A}$	300	-	-	V	
V_{FM}	Maximum Forward Voltage	$I_{FM} = 120\text{A}, T_c = 25^\circ\text{C}$	-	1.3	1.55	V	
		$I_{FM} = 120\text{A}, T_c = 100^\circ\text{C}$	-	1.1	1.4	V	
I_{RRM}	Repetitive Peak Reverse Current	$T_c = 100^\circ\text{C}, V_{RRM}$ applied	-	-	1.0	mA	
T_{rr}	Reverse Recovery Time	$I_{FM} = 120\text{A},$ $V_R = 200\text{V}$ $di/dt = -100\text{A}/\mu\text{s}$	$T_c = 25^\circ\text{C}$	-	55	80	ns
			$T_c = 100^\circ\text{C}$	-	85	-	ns

Performance Curves

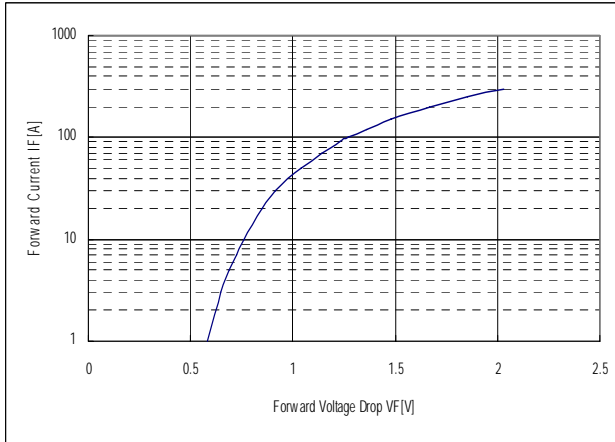


Fig. 1 : Typical Forward Voltage Drop vs. Instantaneous Forward Current

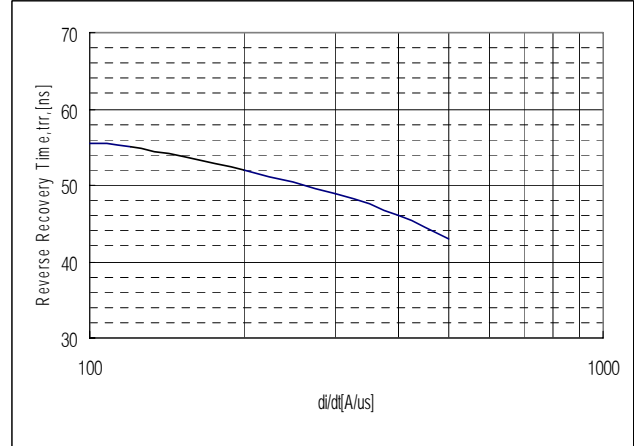


Fig. 2 : Typical Reverse Recovery Time vs. $-di/dt$

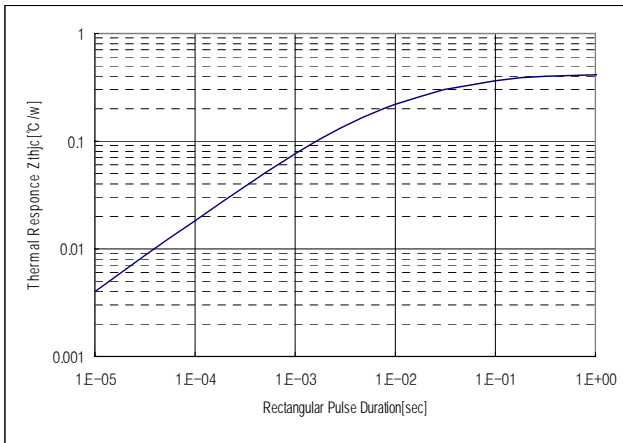


Fig. 3 : Transient Thermal Impedance(Z_{thjc}) Characteristics

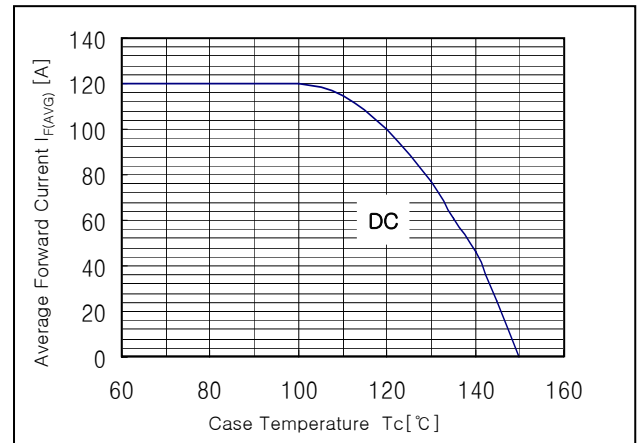
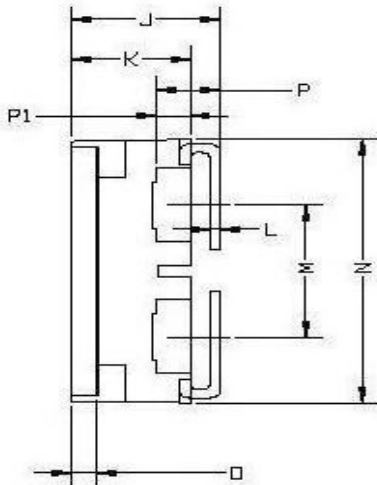
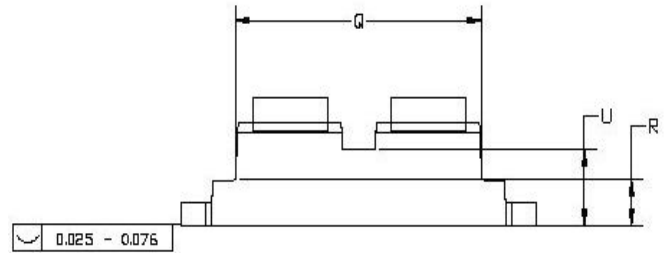
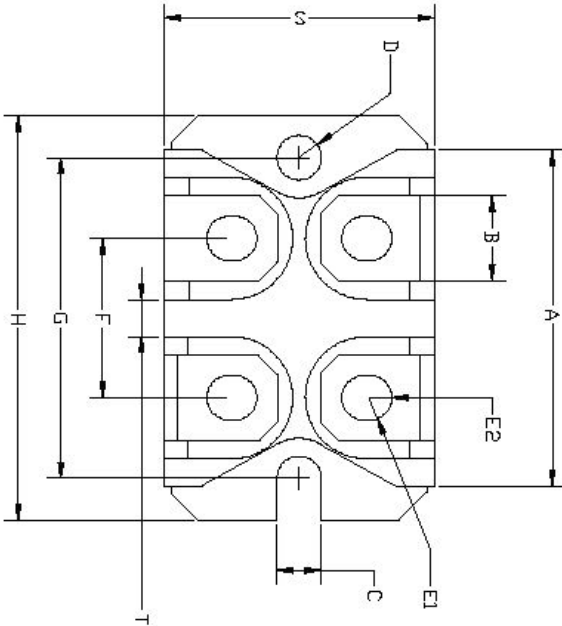


Fig. 4 : Forward Current Derating Curve

Package Out Line Information

SOT-227

Dimensions in mm



ITEM	mm		Inch	
	MIN	MAX	MIN	MAX
A	31.50	31.70	1.240	1.248
B	7.80	8.18	0.307	0.322
C	4.09	4.19	0.161	0.165
D	4.09	4.27	0.161	0.168
E1	4.09	4.29	0.161	0.169
E2	4.72	4.85	0.186	0.191
F	14.91	15.09	0.587	0.594
G	30.12	30.30	1.186	1.193
H	38.00	38.20	1.496	1.504
J	11.81	12.12	0.465	0.480
K	8.92	9.59	0.351	0.377
L	0.76	0.84	0.030	0.033
M	12.60	12.80	0.496	0.504
N	25.20	25.45	0.992	1.002
O	1.98	2.13	0.078	0.084
P	5.11	5.89	0.201	0.232
P1	2.67	2.87	0.105	0.113
Q	26.54	26.90	1.045	1.059
R	3.94	4.42	0.155	0.174
S	24.59	25.07	0.968	0.987
T	3.30	3.61	0.130	0.142
U	6.88	7.09	0.271	0.279
V				